



FarmManager™ + Sketcher - Complete	S5090650
FarmManager™ + Sketcher - Start up	S5090750
FarmManager™ + Sketcher - Upgrade	S5090700
FarmManager™ + Sketcher - Annual maintenance	S5080800
FarmManager™ + Sketcher - Data sharing start up	S5090930

Contents

Applications _____	1
Minimum PC requirements _____	2
Screen layout _____	3
Examples _____	4
Options _____	6



Applications

With FarmManager™ you can operate the controllers in your company from a central PC. This can save you a lot of time and helps you to manage your company more efficiently.

- **Central operation of controllers**

Almost every action you normally make on a controller can be made through FarmManager™. The key layout of the controllers is also used in FarmManager™, because of which the control data is displayed as you are used to.
- **Alarms**

Alarms that occur on a controller are also displayed in FarmManager™. If so desired you can adjust the alarm status. Alarms can be sent as a text message.
- **Graphs and tables**

You can make graphs and tables of control data. You can combine the data of different control units in one graph.
- **Overviews**

The special overviews from the controls will make the daily usage much easier and efficient than on the controller itself.
- **Back-ups of controllers**

You can make a back-up (reserve copy) of the data of the controllers. This enables you to restore the old situation, e.g. because new settings do not fulfil the requirements.
- **Archives**

An archive is a copy of the current company situation in FarmManager™. An archive contains among others all connected controllers and graphs. With an archive you can look at your company's situation at a certain moment in the past. Furthermore you can compare your current situation with the archive.
- **Plus data**

You can add your own data to the controllers. These data are only saved in FarmManager™, not in the control units. With plus data you can make calculations, e.g. cost calculations.
- **Data sharing**

Data sharing is the ability to synchronise updated information from one 'data share ready control' to another. This is a start-up service that is offered as a support service. It is available with FarmManager™ 11.4 onwards. For more information please refer to the Product Application Manual information on data sharing.



- **Email Reporting and alerts**

FarmManager™ has the ability to send out emails with attached CSV's providing the receiver with a report on the status of the farm based on sampled data. It is also possible to send alerts via email.

From: noreply@farmmanager.com [mailto:noreply@farmmanager.com]
 Sent: 28 May 2012 23:45
 To: Simon Lague - Fancorn BV
 Subject: Sample task email F3882_1_1 Finished

FARMMANAGER NOTIFICATION SERVICE

SAMPLE NOTIFICATION

Execution of sample task email F3882 is finished

SAMPLE DATA NOTIFICATION FOR CONTROL UNIT | F3882_1_1

Day	Time	Date	AgeWeeks(1,1)	AgeWeekDay(1,1)	No. Birds setup hen 2(1,1)	No. Birds hen 2(1,1)	Cum Loss hen 2(1,1)	Cum Feed hen 2(1,1)	No. Birds hen 2(1,1)	No. Birds hen 2	No. Birds setup hen 2(1,1)	No. Birds setup hen 2
28-5-2012	23:45	28-05-12	38	4	4315	3784	531	606	3784	590	4315	849
27-5-2012	23:45	27-05-12	38	3	4315	3786	629	606	3786	591	4315	849
26-5-2012	23:45	26-05-12	38	2	4315	3786	629	606	3786	592	4315	849
25-5-2012	23:45	25-05-12	38	1	4315	3786	629	606	3786	592	4315	849
24-5-2012	23:45	24-05-12	38	0	4315	3786	629	606	3786	595	4315	849
23-5-2012	23:45	23-05-12	37	6	4315	3788	627	567	3788	595	4315	849
22-5-2012	23:45	22-05-12	37	5	4315	3792	623	618	3792	595	4315	849

In general, FarmManager™ supports the following “lines” of controllers: FC-line, 700/FSU-line, F2000-line.

The above list does not mention the following lines (which thus are not supported): ESA, ESU, DS, 600-line. Also keep in mind that the “presentations” cannot be made at all. This especially has consequences for the 778, 771, 743 and 746.

Other options available for these models:

- Upgrade to FarmManager™ with the F71/F78. (There are no similar options for 743/746).
- Discuss other possibilities with your area sales manager.
- For the 746 there are no overview options, but FarmManager for Layers is available, which introduces a higher level of house management.

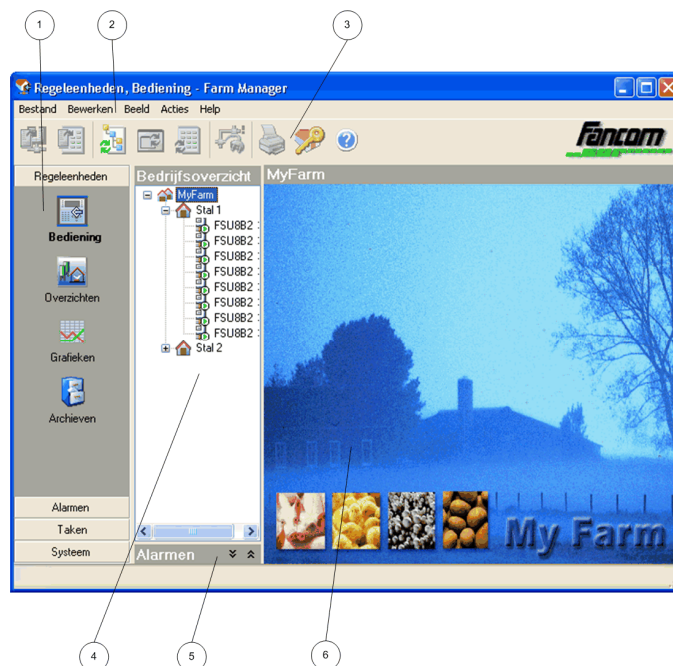
Minimum PC requirements

The PC has to meet the following minimum requirements:

- Intel® Core™ i5-2500 Processor
- 4GB internal Memory
- 500 GB hard drive
- DVD-ROM drive and Windows compatible mouse
- Free serial port or USB port for Greenlinkbox SLT™
- Ethernet connection for GreenLinkBox ELT™ or WebLinkBox™
- Windows 7 OS (or XP pro service pack 3)
- Colour monitor – at least 22 inch



Screen layout

**Short cut menu (1)**

All the main parts of FarmManager™ can be started via this menu. To carry out a certain action, make a selection in this menu. First select a category (for example Control Units), followed by a function (for example Operation).

After selection the corresponding data will appear on the screen. You can now work with the options in the menu bar and the tool bar.

Menu bar (2) and Tool bar (3)

Use these options for the various actions. The menu bar and tool bar always correspond to the selected function. Options will only appear if they apply (can be applied) to the selected function and the data shown.

Farm structure or Device structure (4)

Overview of locations (houses) and devices connected to FarmManager™.

Alarms (5)

Active alarms are shown in this category. This will be explained separately.

Display area (6)

The display area shows data that you can work with. The display area configuration differs according to the function. For example, the display area of option *Control Units* → *Operation* shows all the keys and codes per control unit. *Control Units* → *Graphs* shows graphs.



Examples

Control Units, Operation - F-Central FarmManager

File Edit View Actions Tools Help

Fancom

Control Units Farm Structure Farm Tree\CP China\F38B2 1.1 (F38B2 1.1)

Overzicht F38

BPBC br1

10.6°

M-FASE 88353 m3 42 % 52 %

0.2°

39 %

Act. Dag 13 Okt 2010 23:09 13084

Control Units, Overviews - F-Central FarmManager

File Edit View Actions Tools Help

Fancom

Control Units Farm Structure Stal 1 F37[7]

Overviews House Curve

General Top

0.0 3.3 10 140 20 Jan 13:27 18.0

109 8.5 0 Pa

76 14815 0%

M-FASE 40 20000 m3



Control Units, Overviews - F-Central FarmManager

File Edit View Actions Tools Help

Control Units Farm Structure F37 - klimaet 51

Overviews House

General Temp Ventilation heating

#	F37 - klima	F37 - klima	F37 - klima	F37 - klima	F37 - klima	F37 - klima	F37 - klima	F37 - klima	F37 - klima	F37 - klima
Name	Stal 51	Stal 52	Stal 53	Stal 54	Stal 55	Stal 57	S.Torne57	Stal 58	Stal 59	Stal 60
House temperature	25.5	25.7	25.6	25.7	26.0	24.2	26.0	25.8	25.7	25.2
House RH%	53	55	55	54	51	56	55	55	55	53
Outside temperature	23.9	23.9	23.9	23.9	23.9	23.9	23.9	23.9	23.9	23.9
Static pressure	21	19	22	20	2	27	16	14	5	12
Inlet position %	20	94	17	47	25	65	37	62	43	66
Ventilation mode	FASE M	FASE T	FASE T	FASE M	FASE M	FASE M	FASE M	FASE M	FASE M	FASE M
Ventilation rate %	100	T1	100	T1	T1	100	T2	T2	T2	T4
Feed / bird	0	0	0	0	0	0	0	0	0	0
Water / bird	0.000	0.000	0.000	0.000	0.000	0.000	0.000	0.000	0.000	0.000
W:F ratio	0	0	0	0	0	0	0	0	0	0
Alarm	ACTIVO	ACTIVO	ACTIVO	ACTIVO	ACTIVO	ACTIVO	ACTIVO	ACTIVO	ACTIVO	ACTIVO
#	0	0	0	0	0	1	1	1	1	0
#	15:59	15:49	14:57	15:55	14:57	15:00	15:56	15:20	14:27	15:20
#	0:00	0:00	0:00	0:00	0:00	0:00	0:00	0:00	0:00	0:00
Cooling	0	0	0	0	0	0	0	0	0	0
Cooling ON	15:59	15:49	14:57	15:55	14:57	15:00	15:56	15:20	14:26	15:20
Birds	30721	35105	31820	34451	35380	31488	36064	36174	31605	36702
Day number	25	25	25	28	28	29	29	29	29	32

Alarms

Control Units, Graphs - F-Central FarmManager

File Edit View Actions Tools Help

Control Units Farm Structure

Valøgd løstems skalen

Temperatur

Time

25-04-06 11:53:09 25-04-06 23:53:09 26-04-06 11:53:09 26-04-06 23:53:09 27-04-06 11:53:09 27-04-06 23:53:09 28-04-06 11:53:09 28-04-06 23:53:09 29-04-06 11:53:09 29-04-06 23:53:09 30-04-06 11:53:09

Control value heating
MyFarmChart\F37B1.1.1(I).I
MyFarmChart\F37B1.1.1(I).I
MyFarmChart\F37B1.1.1(I).I
MyFarmChart\F37B1.1.1(I).I

Current inlet position
MyFarmChart\F37B1.1.1(I).I
MyFarmChart\F37B1.1.1(I).I
MyFarmChart\F37B1.1.1(I).I
MyFarmChart\F37B1.1.1(I).I

Current ventilation rate
MyFarmChart\F37B1.1.1(I).I
MyFarmChart\F37B1.1.1(I).I
MyFarmChart\F37B1.1.1(I).I
MyFarmChart\F37B1.1.1(I).I

House temperature
MyFarmChart\F37B1.1.1(I).I
MyFarmChart\F37B1.1.1(I).I
MyFarmChart\F37B1.1.1(I).I
MyFarmChart\F37B1.1.1(I).I

Minimum ventilation (m3/s)
MyFarmChart\F37B1.1.1(I).I
MyFarmChart\F37B1.1.1(I).I
MyFarmChart\F37B1.1.1(I).I
MyFarmChart\F37B1.1.1(I).I

Outside temperature
MyFarmChart\F37B1.1.1(I).I
MyFarmChart\F37B1.1.1(I).I
MyFarmChart\F37B1.1.1(I).I
MyFarmChart\F37B1.1.1(I).I

Setpoint house
MyFarmChart\F37B1.1.1(I).I
MyFarmChart\F37B1.1.1(I).I
MyFarmChart\F37B1.1.1(I).I
MyFarmChart\F37B1.1.1(I).I

Stall temperature ventilation
MyFarmChart\F37B1.1.1(I).I
MyFarmChart\F37B1.1.1(I).I
MyFarmChart\F37B1.1.1(I).I
MyFarmChart\F37B1.1.1(I).I

Graph Table Codes



Options

Function	
Automatic installation controllers	√
Fancom FC-controllers	√
Fancom 700-controllers	√
Fancom F2000-controllers	√
Maximum number Greenlinkboxes SLT.22, ELT or WebLinkBoxes™	Unlimited
Maximum number controllers	100
Maximum number controllers / sections	500
Maximum number controllers <u>per</u> F_Net-device	30
Maximum number controllers <u>per</u> F_Loop-device	30
Install controllers	√
Configure controllers	√
Alarm overviews	√
Alarm logger	√
Alarm messages via text message	√
Back-up/Restore controller settings (FC's no restore function!)	√
Sample tasks	√
Graphs and tables of sample data	√
Export sample data	√
Create and import archives	√
Display overviews	√
User's keys	√
Language option	√
Password	√
FarmSketcher for constructing or modifying overviews. (Additional training recommended)	√