

**AT 35 THROTTLING UNIT****A4327011****AT 40 THROTTLING UNIT****A4327012****AT 45 THROTTLING UNIT****A4327013****AT 50 THROTTLING UNIT****A4327014****AT 56 THROTTLING UNIT****A4327015****Contents**

Applications	1
Features	1
Options	1
Dimensions	1
Wiring	2
Technical specifications	2

**Applications**

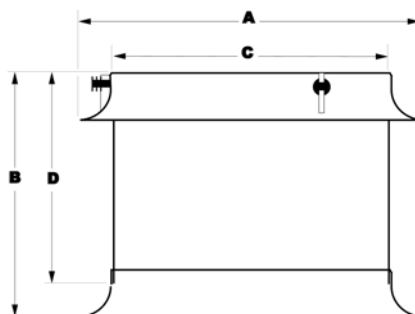
The Fancom AT-unit is a part of the ventilation system that is used to throttle the airflow through the chimney using the vortex damper.

**Features**

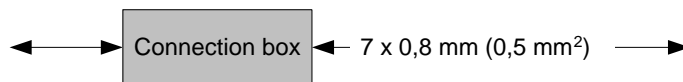
- Fancom throttling unit in chimney module in diameters of 35 up to and including 56 cm.
- Quick installation system using connecting pins making it easy to connect the throttling and measuring unit to the fan module or to the Fancom chimney.
- The actuator in the ATM needs an AC power supply. When a DC power is supplied, the vortex damper will automatically open (fail safe).
- The power supply for the actuator is coming from the PFB (Power Fail Box). This PFB contains a 100VA transformer and a battery. When there is no power supply (230V), the PFB will switch automatically from AC to DC, thus opening the vortex damper automatically.

**Options**

- Power Fail Box (PFB) for the power supply and automatically opening of the vortex dampers at power break down. Artikel codes A7120013.05 + A5431003
- Protection grids are available in all sizes. The protection grids are made of stainless steel. The protection grid can be connected to the air entry cone of the chimney module

**Dimensions**

Type	$\phi A$ Largest diameter [mm]	B Height with air entry cone [mm]	$\phi C$ Outside diam. of the chimney to be connected [mm]	D Height without air entry cone [mm]
35	440	393	362	350
40	502	398	412	350
45	565	404	462	350
50	628	410	512	350
56	702	418	572	350

**Wiring**

Operating voltage  
Control signal 10-0 V

**Technical specifications****AT vortex damper**

Supply voltage	18-30Vac
Power consumption	4W
Maximum current	200 mA
Control signal	10-0Vdc
Running time 90° angular rotation	22 sec.
Normal condition at delivery	0Vdc open, 8.5Vdc almost closed
Possibility to adjust the position at maximum control voltage	
Trafo	Maximum 16 actuators on 100VA trafo
PFB	Maximum 16 actuators on PFB

**Housing**

Protection class	IP55
35 Weight (unpacked)	7.2kg
40 Weight (unpacked)	8.0kg
45 Weight (unpacked)	9.4kg
50 Weight (unpacked)	10.6kg
56 Weight (unpacked)	11.6kg

**Ambient climate**

Operating temperature range	0°C to +40°C (32°F to 104°F)
Storage temperature range	-10°C to +50°C (50°F to 122°F)
Relative humidity	<95%, uncondensed